

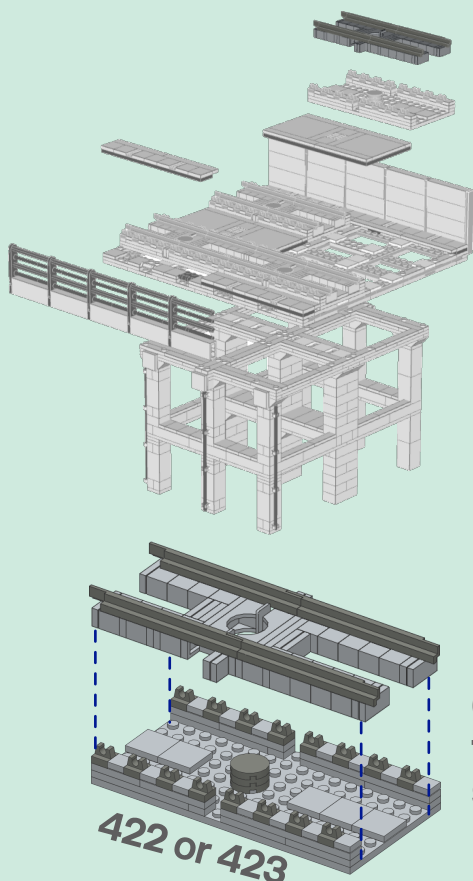
VIATrack Track Section Concrete Open Slab

Reference Instructions Sheet

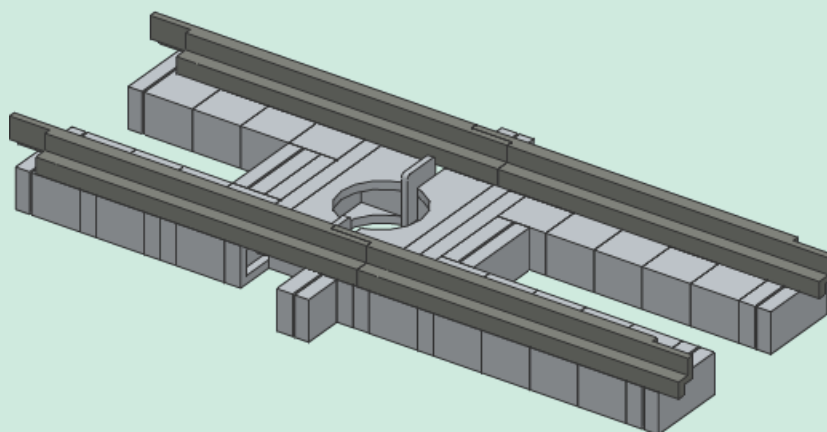
412

Rev
A

60 pcs



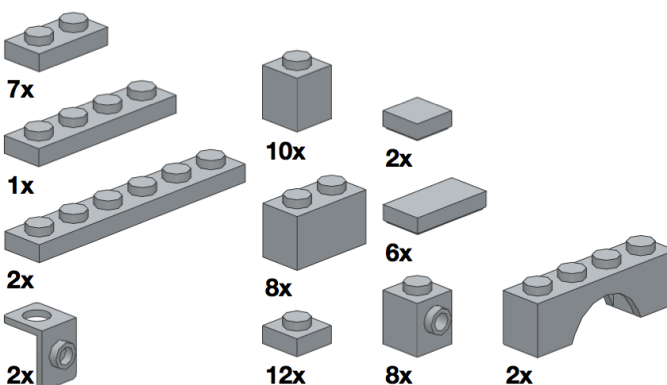
Combine with 422 or 423
to make complete track
section assembly



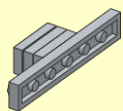
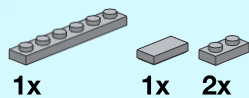
Parts List

Notes

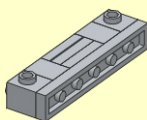
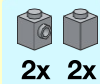
This assembly requires 2x
straight rail sections.
Acceptable rail elements
include:
4x ME901-HF or
2x ME901-ST or
2x ME901-DB from ME Models
or
3228c or 3228b from LEGO



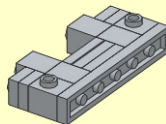
1



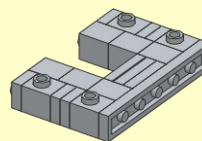
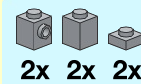
2



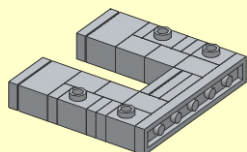
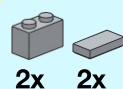
3



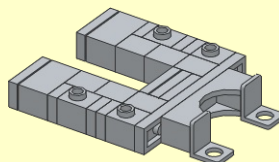
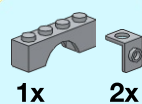
4



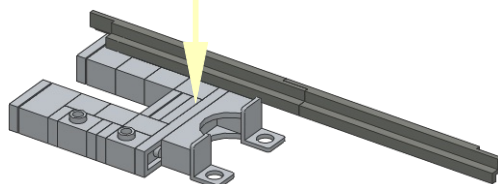
5



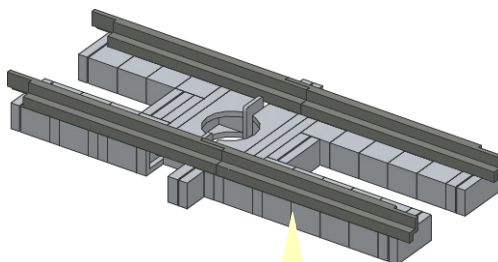
6



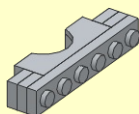
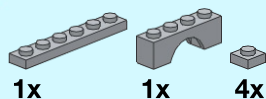
1



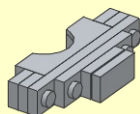
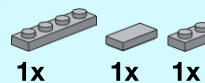
2



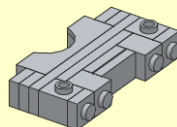
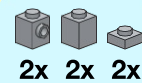
1



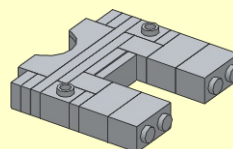
2



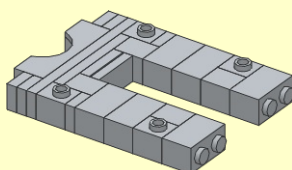
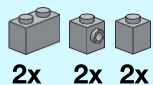
3



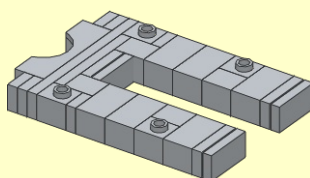
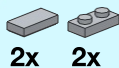
4



5



6



7

